



**UTC Fire & Security**

A United Technologies Company

newborn

**New DI601/DDI602 outdoor motion sensors**

**Detect outside,  
protect inside**

We listened to you



# Unique benefits, multiple applications

## Quad PIR and Dual Tech versions available

The DI601 PIR Detector is an outdoor motion detector and alarm trigger that uses two independent passive infrared detectors integrated into one housing. This quad PIR technology delivers precise, reliable presence detection whilst avoiding false alarms.

The DDI602 includes a microwave sensor module which provides a higher level of detection as all three sensors (2 PIR's + microwave) must be activated in order to trigger an alarm.



## Easy and quick to install

Programmable options include variable pulse count and a choice of three detection ranges: 10m, 20m and 30m. Both models include jumpers that allow configuration of end-of-line (EOL) resistor values. Moreover, the integral dual-axis tilt sensor allows 180° pan and 90° tilt facilitating outdoor installation and provides accurate detection pattern coverage.

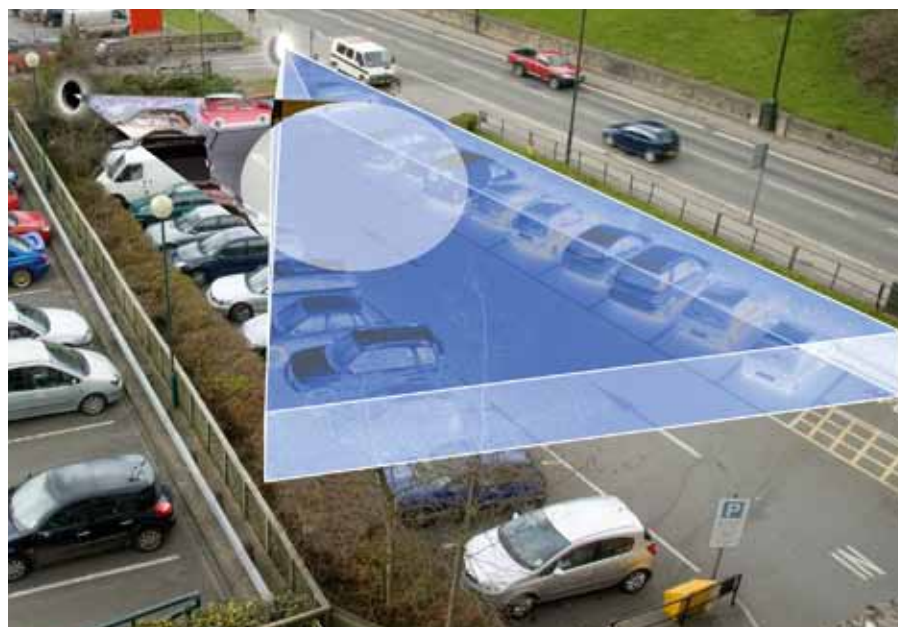


## Attractive design

Thanks to their streamlined design, these detectors blend seamlessly into outdoor installations, providing discreet protection.

## Customized coverage

Integrated curtain sliders allow customisation of detection coverage. An additional set of curtain sliders is provided to narrow the beam pattern even further to a detection angle of 10 degrees. The self-adhesive silver mask can be applied on the lens to mask an area or to customise the field of view (e.g. to achieve pet immunity).



## All Seasons

Functional in temperatures from  $-30^{\circ}\text{C}$  to  $65^{\circ}\text{C}$ , these detectors are all-season proof. In addition, IP65 approval assures superior detection in dusty and humid environments. These products are available with a 5 year warranty period.



<b>Specifications</b>	DI601	DDI602
<b>Detection Area Programmable:</b>	10 m, 20 m, or 30 m	
<b>Coverage</b>	10 to 70° detection angle, 30 x 24 m coverage max.	
<b>Adjustment</b>	180° pan, 90° tilt	
<b>Fresnel lens</b>	28 zones for each detection element, which can be masked with the curtain sliders	
<b>Customized optics</b>	Double silicon shielded quad element eliminates 50,000 lux of white light	
<b>Outputs</b>	Silent, solid state, magnetically immune	
N/O	Volt free relay, signal contact 24 VAC/DC at 50 mA with an integral 25 series resistor. Alarm time 5 seconds	
N/C	Volt free relay, signal contact 24 VAC/DC at 50 mA with an integral 25 series resistor. Alarm time 5 seconds	
<b>Power input</b>	9 to 15 VDC	
<b>Current</b>	7 mA (12 V nominal)	11 mA (12 V nominal)
<b>Pulse count</b>	1 or 2	
<b>Temperature compensation</b>	Analogue (thermistor) and digital sensitivity adjustment	
<b>Control</b>	Digital microprocessor with nonvolatile memory	
<b>Operating storage temperature</b>	-30 to +65°C	
<b>Housing</b>	High impact ABS plastic with HDPE cover, UV stabilized	
<b>Dimensions, W x H x D</b>	147 x 187 x 140 mm	
<b>Weight</b>	306 g net, 532 g gross	323 g net, 549 g gross
<b>LEDs</b>		
Top red	—	Programming LED
Red	Programming LED	PIR active
Blue	Detector Alarm	
Infrared	Walk tester communication	
<b>Built in EOL resistors' values</b>	1, 2.2, 3.3, 4.7, 5.6, and 6.8 k ohm	
<b>Mounting height</b>	Variable up to 6 m. Optimum height 3 m for full range	

## Ordering Information

Part No.	Description
<b>DI601</b>	Outdoor PIR 10/20/30m - 33/66/98ft selectable
<b>DDI602-F1</b>	Outdoor Dual Technology detector 10.525 GHZ 10/20/30m selectable
<b>DDI602-F2</b>	Outdoor Dual Technology detector 10.587 GHZ 10/20/30m selectable
<b>DDI602-F3</b>	Outdoor Dual Technology detector 9.9 GHz 10/20/30m selectable
<b>DI601-WT</b>	Walk tester for DI601 and DDI602 series

## Security approvals

- EN50130-5, Grade 2, Class IV
- Incert (pending)

[www.gesecurity.eu](http://www.gesecurity.eu)

