

# TruVision Navigator v5

The next generation  
in video management



## OVERVIEW

TruVision® Navigator v5 represents the latest advancement in video management software. This single application delivers centralized and remote video management capabilities combined with backward compatibility to accommodate legacy recorders and TruVision DVRs, NVRs and newly released commercial off-the-shelf server Software Video Recorder (SVR). Ideal for LAN or WAN applications, TruVision Navigator v5 is well suited for any application incorporating multiple sites such as schools, retail stores, bank branches, entertainment venues and geographically dispersed organizations.

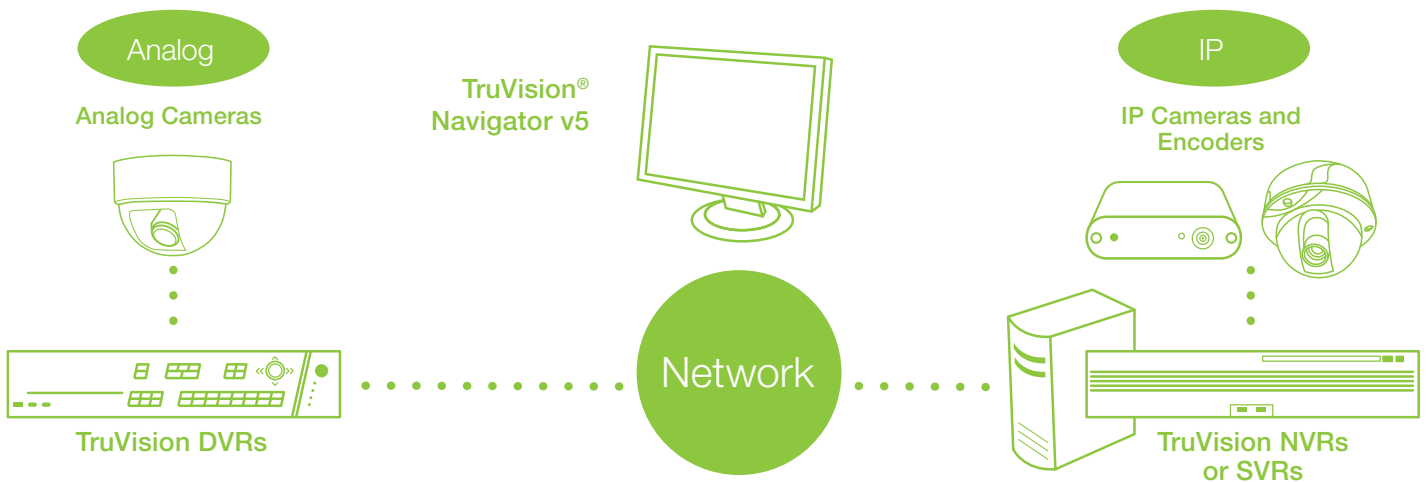
From a single, easy-to-use and reliable GUI, administrators can remotely configure users/groups, DVRs with analog cameras, NVRs/SVRs with IP cameras and encoders, and monitor thousands of video surveillance components. At any time, from any location, operators can cost-effectively provide accurate and timely security response. Backed by client/server architecture, TruVision Navigator v5 is a fully scalable solution that can support applications ranging from enterprise IT environments down to small, stand-alone systems.

## STANDARD FEATURES

- Backward compatibility protects legacy equipment investment
- Flexible technology that incorporates analog and IP compatibility meets current and future needs
- Scalable software architecture from enterprise IT to stand-alone systems
- Remote client software distribution eliminates shipping media
- Centralized administration reduces administrative workload and security risk
- Health diagnostic service automatically polls for data to maintain constant system uptime. Data can also be exported in a document format
- Device notifications expedite tracking and issue resolution
- Remote device configuration reduces administration time and costly site visits
- Embedded device discovery and management tool simplifies system installation and maintenance
- Remote control of focus and zoom functions of supported Interlogix cameras makes megapixel installations easier and more efficient
- Scheduled tasks occur during low-bandwidth hours to optimize network capacity during peak demand
- 75-up, multi-site, multi-monitor feature integrates all recording platforms in a single video display
- Custom views allow for user-specified groupings of video streams
- Network Time Protocol (NTP) service keeps all system devices synchronized with appropriate time and date
- Evidence Player plays exported video with a max 9-up display, print and snapshot capability, synchronous playback, timeline search and full-screen mode
- Tampering monitor identifies any camera tampering via a reference image

## System Diagram

Powerful enough to accommodate either analog or IP camera installations, or a mixture of the two via a supported DVR/NVR/SVR.



## Key Software Functions



### Navigator

Provides access to all DVRs, NVRs, SVRs and cameras in a system with minimal clicks to pinpoint specific video objects.

### Viewer

View live and recorded video selected from the Notifier, Navigator or Collector. Manipulate video in the Viewer using tools that include live and playback video switching, marking video segments, taking snapshots, performing timeline seeks and go-to searches, playback controls and stream switching.

### Collector

Acts as a holding repository for video segments, snapshots and local recordings ready for export.

### Tasks

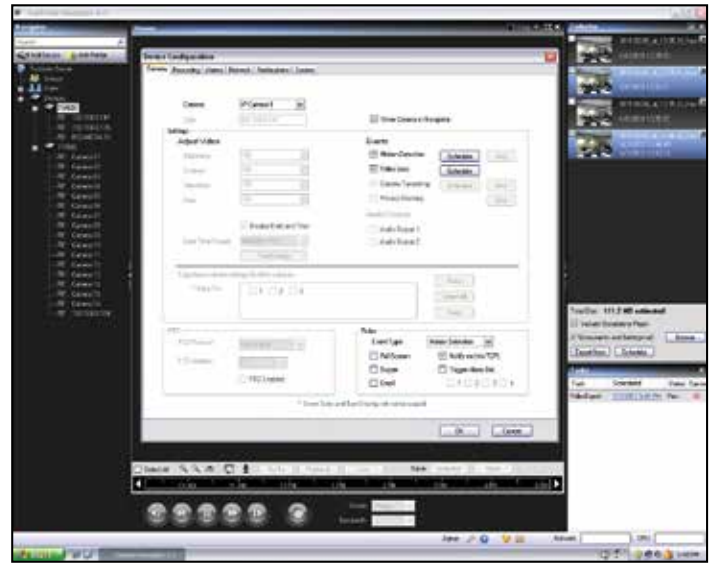
Provides one central place to monitor the progress of the tasks created in the system, such as video exports, firmware upgrades, bulk DVR configurations and database backup and restores.

### Notifier

Collect and manage any notifications sent from the various devices.

## TruVision® Navigator

Presents one common interface to the user no matter what the device or camera type. This greatly improves organizational efficiency by reducing set-up time and minimizing training requirements.



## Device Configuration DVR

For the user, remote configuration of a DVR or NVR is seamless and just one click away—no need to launch different applications or browsers.

## Device Configuration NVR

Model	MAC Address	IP Address and Port	Device Name	Serial Number
TN100	00-40-04-01-00-00	192.168.1.100	200-200-0-0	TN10001100100000000000000000000000
TN100	00-40-04-01-00-01	192.168.1.101	200-200-0-1	TN10001100100000000000000000000001
TN100	00-40-04-01-00-02	192.168.1.102	200-200-0-2	TN10001100100000000000000000000002
TN100	00-40-04-01-00-03	192.168.1.103	200-200-0-3	TN10001100100000000000000000000003
TN100	00-40-04-01-00-04	192.168.1.104	200-200-0-4	TN10001100100000000000000000000004
TN100	00-40-04-01-00-05	192.168.1.105	200-200-0-5	TN10001100100000000000000000000005
TN100	00-40-04-01-00-06	192.168.1.106	200-200-0-6	TN10001100100000000000000000000006
TN100	00-40-04-01-00-07	192.168.1.107	200-200-0-7	TN10001100100000000000000000000007
TN100	00-40-04-01-00-08	192.168.1.108	200-200-0-8	TN10001100100000000000000000000008
TN100	00-40-04-01-00-09	192.168.1.109	200-200-0-9	TN10001100100000000000000000000009
TN100	00-40-04-01-00-10	192.168.1.110	200-200-0-10	TN10001100100000000000000000000010
TN100	00-40-04-01-00-11	192.168.1.111	200-200-0-11	TN10001100100000000000000000000011
TN100	00-40-04-01-00-12	192.168.1.112	200-200-0-12	TN10001100100000000000000000000012
TN100	00-40-04-01-00-13	192.168.1.113	200-200-0-13	TN10001100100000000000000000000013
TN100	00-40-04-01-00-14	192.168.1.114	200-200-0-14	TN10001100100000000000000000000014
TN100	00-40-04-01-00-15	192.168.1.115	200-200-0-15	TN10001100100000000000000000000015
TN100	00-40-04-01-00-16	192.168.1.116	200-200-0-16	TN10001100100000000000000000000016
TN100	00-40-04-01-00-17	192.168.1.117	200-200-0-17	TN10001100100000000000000000000017
TN100	00-40-04-01-00-18	192.168.1.118	200-200-0-18	TN10001100100000000000000000000018
TN100	00-40-04-01-00-19	192.168.1.119	200-200-0-19	TN10001100100000000000000000000019
TN100	00-40-04-01-00-20	192.168.1.120	200-200-0-20	TN10001100100000000000000000000020

Model	Assigned To	MAC Address	IP Address and Port	Device Name	Status	Serial Number	Comment State
TN100		00-40-04-01-00-00	192.168.1.100	200-200-0-0	OK	TN10001100100000000000000000000000	
TN100		00-40-04-01-00-01	192.168.1.101	200-200-0-1	OK	TN10001100100000000000000000000001	
TN100		00-40-04-01-00-02	192.168.1.102	200-200-0-2	OK	TN10001100100000000000000000000002	
TN100		00-40-04-01-00-03	192.168.1.103	200-200-0-3	OK	TN10001100100000000000000000000003	
TN100		00-40-04-01-00-04	192.168.1.104	200-200-0-4	OK	TN10001100100000000000000000000004	
TN100		00-40-04-01-00-05	192.168.1.105	200-200-0-5	OK	TN10001100100000000000000000000005	
TN100		00-40-04-01-00-06	192.168.1.106	200-200-0-6	OK	TN10001100100000000000000000000006	
TN100		00-40-04-01-00-07	192.168.1.107	200-200-0-7	OK	TN10001100100000000000000000000007	
TN100		00-40-04-01-00-08	192.168.1.108	200-200-0-8	OK	TN10001100100000000000000000000008	
TN100		00-40-04-01-00-09	192.168.1.109	200-200-0-9	OK	TN10001100100000000000000000000009	
TN100		00-40-04-01-00-10	192.168.1.110	200-200-0-10	OK	TN10001100100000000000000000000010	
TN100		00-40-04-01-00-11	192.168.1.111	200-200-0-11	OK	TN10001100100000000000000000000011	
TN100		00-40-04-01-00-12	192.168.1.112	200-200-0-12	OK	TN10001100100000000000000000000012	
TN100		00-40-04-01-00-13	192.168.1.113	200-200-0-13	OK	TN10001100100000000000000000000013	
TN100		00-40-04-01-00-14	192.168.1.114	200-200-0-14	OK	TN10001100100000000000000000000014	
TN100		00-40-04-01-00-15	192.168.1.115	200-200-0-15	OK	TN10001100100000000000000000000015	
TN100		00-40-04-01-00-16	192.168.1.116	200-200-0-16	OK	TN10001100100000000000000000000016	
TN100		00-40-04-01-00-17	192.168.1.117	200-200-0-17	OK	TN10001100100000000000000000000017	
TN100		00-40-04-01-00-18	192.168.1.118	200-200-0-18	OK	TN10001100100000000000000000000018	
TN100		00-40-04-01-00-19	192.168.1.119	200-200-0-19	OK	TN10001100100000000000000000000019	
TN100		00-40-04-01-00-20	192.168.1.120	200-200-0-20	OK	TN10001100100000000000000000000020	

## Discovery Tool

Discovery and Device Management Tools make adding and configuring devices and cameras simple and easy.

## Device Management

## Specifications

### Client Requirements: Software

Component	Version	Notes
Operating System	Microsoft Windows XP Pro SP3	Prerequisite to loading TruVision® Navigator
	Microsoft Windows Vista SP1 32-bit/64-bit	Prerequisite to loading TruVision Navigator
	Microsoft Windows 7 32-bit/64-bit	Prerequisite to loading TruVision Navigator
	Microsoft Windows 8 32-bit/64-bit	Prerequisite to loading TruVision Navigator (see user manual for instructions to install)
	Microsoft Windows Server® 2003 R2 32-bit	Prerequisite to loading TruVision Navigator
	Microsoft Windows Server® 2008 R2 32-bit/64-bit	Prerequisite to loading TruVision Navigator
Other	Microsoft .NET Framework 4.0	Packaged with the installation

### Client Requirements: Hardware

Component	Minimum	Recommended	High	Notes
Processor	3rd Gen Intel Core i3-3220 Processor (Dual Core, 3.30GHz, 3MB, w/ HD2500 Graphics)	3rd Gen Intel Core i5-3470 Processor (6MB, 3.2GHz) w/ HD2500 Graphics	3rd Gen Intel Core i7-3770 Processor (8MB, 3.4GHz) w/ HD4000 Graphics	CPU power is directly related to the performance of the application when running and rendering video. The better the CPU, the more responsive your application will be.
Memory	4GB, NON-ECC, 1600MHZ DDR3, 2DIMM	6GB, NON-ECC, 1600MHZ DDR3, 2DIMM	8GB, NON-ECC, 1600MHZ DDR3, 2DIMM	RAM is related to the number of different applications that can run simultaneously as well as the number of different operations that TruVision Navigator can perform at once. The higher the RAM, the better performance you can expect.
Hard Drive	500GB - 7200RPM, SATA 3.0Gb/s, 16MB Cache	500GB - 7200RPM, SATA 3.0Gb/s, 16MB Cache	500GB - 7200RPM, SATA 3.0Gb/s, 16MB Cache	TruVision Navigator requires approximately 800 MB to install. If you wish to store exported video from the devices on the machine, you may want to increase storage.
Graphics Card	Intel Integrated Graphic w/Single HDMI/VGA	Dual 1GB AMD Radeon™ HD 7470	Dual 1GB AMD Radeon™ HD 7470	Video card capability is directly related to the video rendering performance within TruVision Navigator. The better the video card, the better video rendering performance you can expect.
Network	Integrated PCIE 10/100/1000	Integrated PCIE 10/100/1000	Integrated PCIE 10/100/1000	The network interface card can be a performance bottleneck depending upon the throughput of the card. If the card's throughput is less than the amount of data streaming to the machine, you will experience performance issues.

### Server Requirements: Hardware

Component	Recommended	Notes
Processor	3rd Gen Intel Core i5-3470 Processor (6MB, 3.2GHz) w/HD2500 Graphics	
Memory	6GB, NON-ECC, 1600MHZ DDR3,2DIMM	
Hard Drive	500GB - 7200RPM, SATA 3.0Gb/s, 16MB Cache	This storage requirement will vary widely depending on many factors, including whether or not the database is being hosted on the server, the size of the actual database, and whether or not you want to store video on the server.
Graphics Card	Dual 1GB AMD Radeon™ HD 7470	Optional— depending on whether or not you want to view video from a Client on this machine.
Network	Integrated PCIE 10/100/1000	

### Server Requirements: Software

Component	Version	Notes
Operating System	Microsoft Windows XP Pro SP3	Prerequisite to loading TruVision Navigator
	Microsoft Windows Vista SP1 32-bit/64-bit	Prerequisite to loading TruVision Navigator
	Microsoft Windows 7 32-bit/64-bit	Prerequisite to loading TruVision Navigator
	Microsoft Windows 8 32-bit/64-bit	Prerequisite to loading TruVision Navigator (see user manual for instructions to install)
	Microsoft Windows Server® 2003 R2 32-bit	Prerequisite to loading TruVision Navigator
	Microsoft Windows Server® 2008 R2 32-bit/64-bit	Prerequisite to loading TruVision Navigator
Web Service	Microsoft Internet Information Services (IIS) 6.0 or higher Cassini	Prerequisite to loading TruVision Navigator Packaged with the installation (only for Windows XP)

## Device Feature Matrix

Feature	TVR11	TVR41	TVR60	TVN20	TVN21	TVN50	SVR	
Network Discovery	Supported							
Compression	H.264			H.264, MPEG-4		H.264, MJPEG, MPEG-4		
Connection Types	TCP UDP						RTP	
Stream Limits	Live Playback		64	48	128		Varies by hardware	
Stream Overlay	Yes							
Viewer Layout Options	1x1, 2x2, 3x3, 4x4, 5x5, Custom							
Maximum Monitor Support	3							
Dual Streaming	Yes						No	
Playback Controls	Play	Yes						
	Pause	Yes						
	Frame Advance	Yes						
	Frame Reverse	Yes		No	Yes		No	
	Fast Forward	Up to 16x						Up to 8x
	Rewind	Yes		No	Yes		No	
	Slow Motion	Up to 0.0625x						No
Digital Zoom	Live Playback		Yes					
Snapshot	Yes							
Tampering Monitor	Yes							
Local Record	Yes							
Instant Replay	Yes							
Disk Analysis	Alarm	Yes						
	Motion	Yes						
	Recorded	Yes						
	Untagged	Yes						
	Video Loss	No						Yes
Video Export	Yes							
TruVision Navigator Player Support	.mp4						.svr	
PTZ Control	Yes							
Focus, Iris, Zoom	Yes							
Presets	Yes							
Tours	Call and Set							
Camera Search	Alarm	Yes						
	Event	Yes						
	Motion	Yes						
	Text	Yes						No
Motion	Yes							
Audio	Yes							
Bi-directional Audio	Yes			No	Yes		No	
Point of Sale	Yes		No	Yes		No		
Notifications	Alarm	Yes						
	Video Loss	Yes						
	Motion	Yes						
	Disk Full	Yes						
	Disk Failure	Yes						
Health Diagnostics	Yes							
Device Report of Health Diagnostics	Yes							
Firmware Upload	Yes						No	
Bulk Firmware Upload	Yes						No	
Device Configuration	Yes						No	
Bulk Configuration	Yes						No	
Remote Reboot	Yes						Via remote desktop connection	

Note: Features listed depend on device type and firmware version used. Please download the latest firmware releases for device in use to get benefits of latest features.

# TruVision Navigator v5

The next generation in video management

North America  
T 855-286-8889

Latin America  
T 561-998-6114

## Supported Recording Devices

Recording Devices	Supported Firmware
TruVision® NVR20	Firmware 2.0h and above
TruVision NVR21	1.0k and above
TruVision NVR50	1.0m and above
TruVision NVR40 (TVN40)	4.3.0 and above
TruVision DVR60 (TVR60)	4.5a and above
TruVision DVR41 (TVR41)	V2.0.e build 130228 and above
TruVision DVR40 (TVR40)	V3.2 and above
TruVision DVR31	V8000 and above
TruVision DVR30 (TVR30)	031j-028B-0676-8000 and above
TruVision DVR10 (TVR10)	V2.7 and above
TruVision DVR11 (TVR11c)	2.1a and above
TruVision DVR11 (TVR11)	2.1a and above
TruVision SVR	7.0.816.7 and above
SymDec 16 plus 4	1.46r, 1.47k, 1.51e, 1.52b, 1.53, and 1.60c
SymDec 4	1.47e and 1.48a
SymDec 1	1.47e and 1.48a
SymSafe Pro Series	1.27b, 1.28i, 1.30b, 1.31.b, 1.32, and 1.40c
SymSafe Basic Series	1.27b, 1.28i, 1.30b, 1.31.b, and 1.32
DVSRxU	V2.3 build 091110 (V2.31S)
DVMRE CT (Triplex) Series	5.68a, 5.69, 5.71, and 5.72
DVMRE CT II Series	6.28a, 6.29, 6.31, and 6.32
DVMRE PRO Series	5.68a, 5.69, and 5.71
DVMRE ezT Series	5.68a, 5.69, and 5.71
DVMRE CS Series	5.21
DVMRE CD Series	3.24
StoreSafe Series	5.68a, 5.69, 5.71 and 5.72
StoreSafe Pro II Series	6.28a, 6.29, 6.31 and 6.32
StoreSafe Advanced Series	6.28a, 6.29, 6.31 and 6.32
DSR	2.23d and 2.24a
DVSE Series	1.20g, 1.41w and 3.04



interlogix.com

Specifications subject to change without notice.

© 2013 United Technologies Corporation.

All rights reserved.

Interlogix is part of UTC Climate, Controls & Security,  
a unit of United Technologies Corporation.

307-3701 2013/11 (76715)



Have feedback for us?  
twnavfeedback@interlogix.com